

NCHC Knowledge	NCHC24	5	local NCHC servers	NCHC Service
----------------	--------	---	--------------------	--------------

In Table 7, summary of factors are presented by target server, variable ID, factor number, operating definition, and factor name.

4.2 Nature of Quality Factors

Based upon the one-way ANOVA of the system health by weekdays, it was concluded that the system health mean values among weekdays are with significant difference.

The so-called overall connecting refers to the service core connection: NCHC local traffic, TANET distributed centers, NKNU center, NKNU Inservice Center, and International Connection.

The education networking, refers to the Traffic toward MOE machine farm, and non-TANET Major Sides.

The South Networking is the traffic toward TANET southern outlet.

The proximal in-service refers traffic toward local in-service servers.

The proximal NCHC service refers to the traffic toward local NCHC servers for both sci-tech Vista, and knowledge service.

4.3 Implications

Logically, there are five sub-groups of those thirty connecting quality indicators. This reduction technique helps engineer to identify quality by factors, not individual indicator separately.

The overall connecting factor would explain near 30% of quality. The education networking factor explain 23% of quality. The south networking explain 12% of quality. The proximal in-service explain 10 % of quality. The proximal NHCH service explain the rest 6% of quality.

The system service maintenance could be more organized based upon the structure of factors. The monitoring might not be become light, but the interpretation work load would be much more less, from thirty separately to five groups. At the same time, the integrating meaning could be identified directly as a whole.

References:

- [1] L.-H. Kuo, H.-C. Lin, M.-K. Ho, and H.-J. Yang, "Assessing Teacher In-service Information System: A Validate of the TPB Model of System Using Behavior," in *the 2nd WSEAS International Conference on Computer Supported Education (COSUE'14)*, Cambridge, MA, USA, 2014: WSEAS Press.
- [2] M. o. Education, "In-service Teachers," *Yearbook of Teacher Education Statistics, The Republic of China*, 2015.
- [3] H.-J. Yang, M.-K. Ho, K. Lung-Hsing, and H.-H. Yang, "Creating a Campus Netflow Model,," in *the 12th International Conference on Telecommunications and Informatics (TELE-INFO'13)*, Baltimore, MD, USA, 2013, pp. 250-255: WSEAS Press.
- [4] B. G. Tabachnick and L. S. Fidell, *Using Multivariate Statistics*, 6 ed. Boston: Pearson, 2013.
- [5] H. Taherdoost, S. Sahibuddin, and N. Jalaliyoon, "Exploratory Factor Analysis; Concepts and Theory," in *the 2nd International Conference on Mathematical, computational and Statistical Sciences (MCAA'14)*, Gdansk, Poland, 2014, pp. 375-382: WSEAS Press.

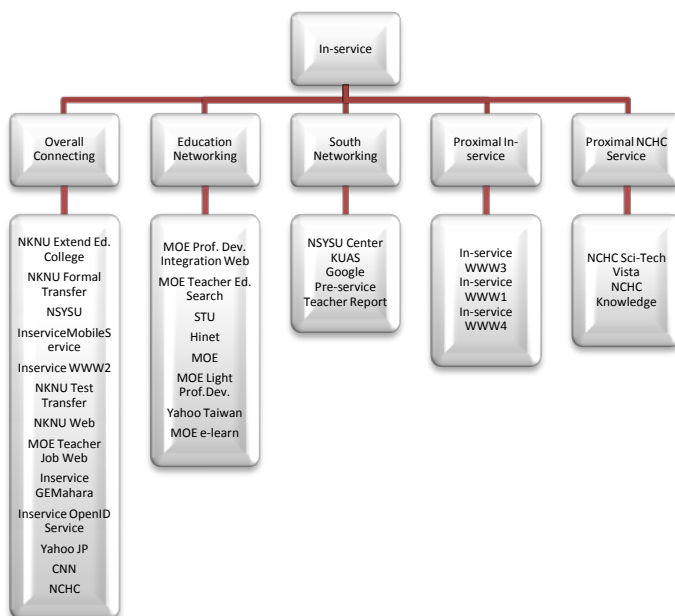


Fig. 4 Factor organization based on quality indicators